

# ORGANIC LUXURY



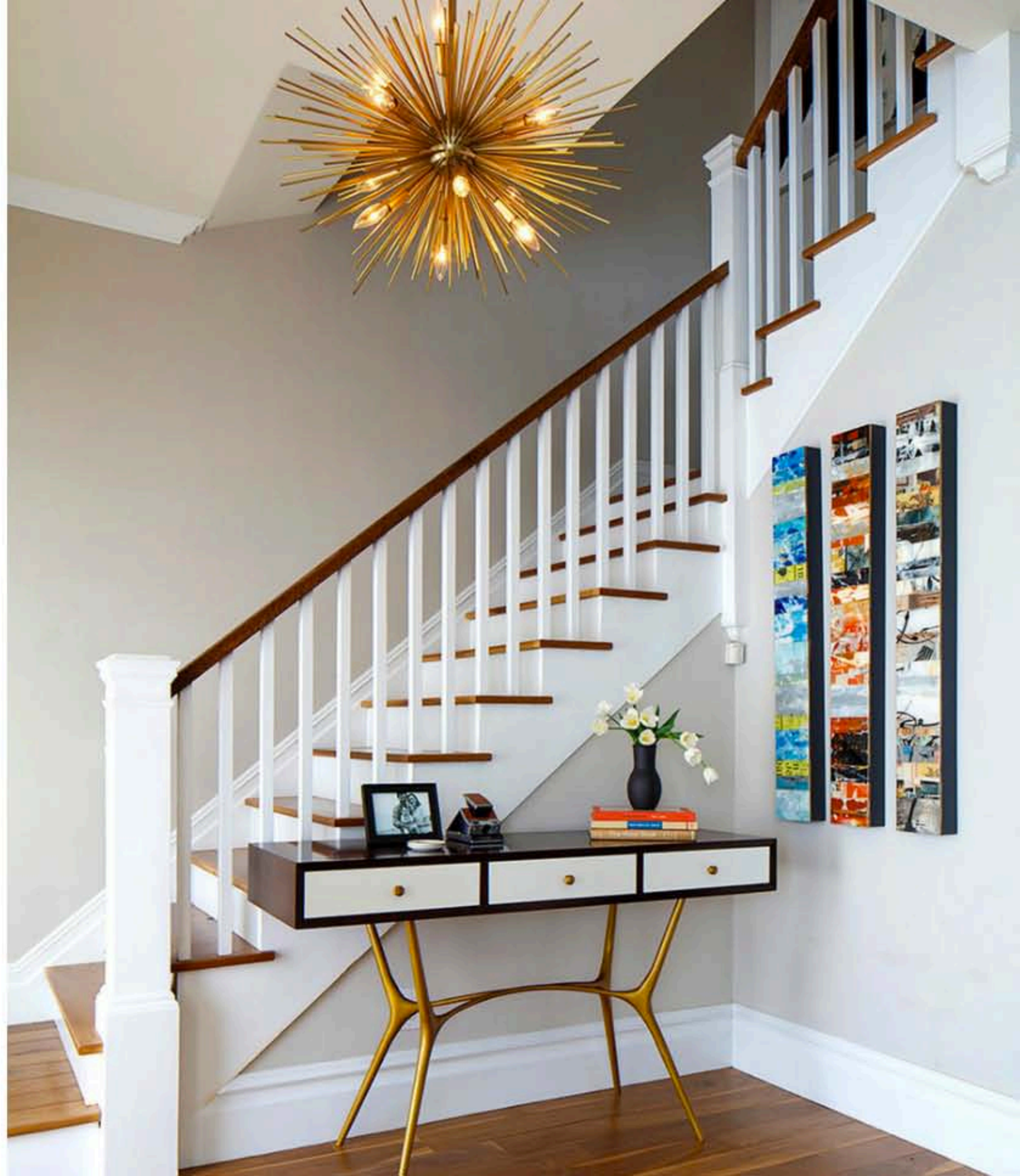
Tineke Triggs brings form and function to a family's first home

**WHEN** a young couple bought their first home in San Francisco, it had recently been flipped. As a result, it was in pretty good shape, but the fixtures and finishes weren't of the best quality, and the overall aesthetic just wasn't quite right. But with great bones, it was the perfect project for designer Tineke Triggs and her firm, Artistic Designs for Living.

Written by Kelli Lamb

Photography by Eric Rorer

Design by Tineke Triggs, Artistic Designs for Living







“We knew that durable materials and clever storage were going to be important to meet the daily demands of a young family, but they didn't want it to be ALL function and no form.”

**SINCE** the couple was expecting their first child, they asked Tineke to create a space that would be family friendly and functional, yet still have elements of nature and an air of well-traveled sophistication. “The couple wanted an eclectic, modern feel to the space,” Tineke explains. Though the kitchen was in great shape, Tineke had her work cut out for her in the rest of the home. “We redesigned the couple’s living room, dining room, entry, powder room, master bedroom, master bathroom and children’s room,” she says. “We knew that durable materials and clever storage were going to be important to meet the daily demands of a young family, but they didn’t want it to be ALL function and no form.”

**IN THE ENTRY,** there was no coat closet — a problem with San Francisco’s ever-changing and unpredictable microclimates. Tineke designed a beautiful angular coat rack and storage space with plenty of bins to hide the inevitable mountain of toys.

**IN THE LIVING ROOM,** she used a neutral palette with bursts of rich orange and gold, creating a cozy, inviting space for the family to gather. Built-in bookcases house the couple’s library and treasures from across the globe, and there’s a small seating alcove next to the large bay windows. A new fireplace surround, made from stacked marble stone, adds a touch of organic luxury.



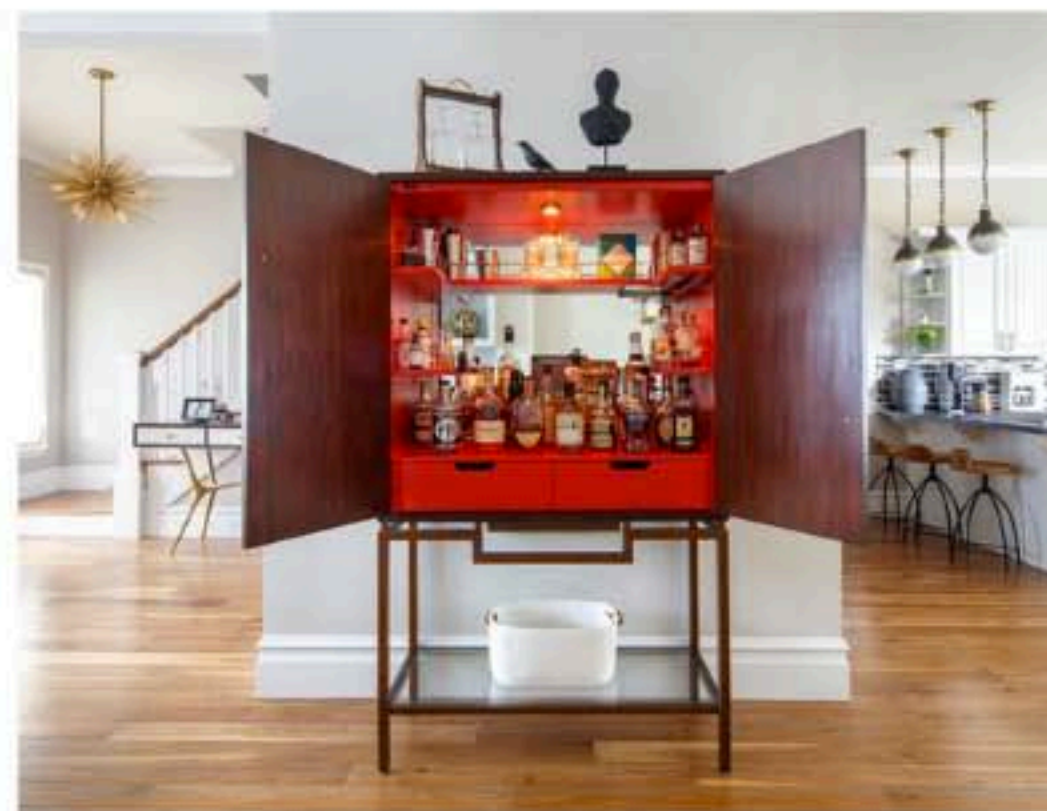


**THE DINING ROOM**, which is directly off of the living space, has even more of that organic vibe — there's an enormous living edge table, sourced from a single slab of natural wood. "It's unusual to be able to create such a large table from a single slice of a tree and this slab was a really special find," Tineke says. "The table is gorgeous and includes all the splits, knots and live edges of this beautiful tree. We added dark wishbone style chairs and dramatic midcentury style lighting above the table for contrast and impact. The couple likes to think of this lighting as representing tree branches above their beautiful live edge table." A bar area for entertaining is just off the kitchen, and boasts whiskies from around the world — the husband's favored souvenir.









**THE SECOND LEVEL** was a bit more of an ordeal. "We redesigned the upstairs and combined three small rooms to create a single master bedroom and bath," Tineke says. A modern bohemian feeling continues in this area, achieved with a combination of rich textures and colors. "We found a delightful little sofa for the foot of the bed that was the perfect height and had it covered in a subtle tribal textile from S. Harris. We also created a custom duvet cover using a wonderful blue ombre pattern." The client didn't want anything to be too matchy-matchy, so one side of the bed has a dresser for extra clothing storage while the other has a pull-out desk. Here, lighting also has a double-entendre. "The oil rubbed bronze lighting above the bed reminded us of a crown and we loved the way it set off the room."





“We redesigned the upstairs and combined three small rooms to create a single master bedroom and bath.”

**A SERENE**, spa-like feeling encompasses the bath. A decadent soaking tub and stylish herringbone tile pattern, (using the same marble from the fireplace downstairs) sets the scene as the perfect escape from the city. The custom Roman shades, made using Water Polo by Kravet, offer up a rippling water pattern, again referencing the family's appreciation of the great outdoors.

**FOR TINEKE**, the best moments are at the end — when everything comes together, and the client's personality and way of life shine bright. Homes that are both beautiful and accessible, like this one, are her firm's trademark. “We offer services from initial space planning to selection, sourcing and design of all types of furnishings, fixtures, tiling, lighting, cabinetry, and artwork. Each project truly is different and we are passionate about finding the creative elements that reflect each client's unique personality.”









“We are passionate about finding the creative elements that reflect each client’s unique personality.”